

# Exporting Network Diagrams from SolarWinds® Network Topology Mapper (NTM)

© 2014, SolarWinds Worldwide, LLC. All rights reserved.

Share:   

Network mapping helps network administrators visualize the entire network topology in a single pane of glass. Network admins are often dependent on these maps for network troubleshooting, design, planning, documentation, and more. However, mapping out the network topology manually could take up a large chunk of their time and effort.

SolarWinds [Network Topology Mapper](#) (NTM) aids in automatic mapping of the network topology and is packed with powerful features to provide an illustration of the network. You can view each workstation, or only Layer 3 devices like routers and their connected networks, to generate useful reports like hardware inventory, switch port usage, compliance reports, and so on.

Some significant features of SolarWinds NTM allow you to:

- Scan your network and auto-generate network maps
- Build [many maps](#) from a single network scan
- Export maps to Visio®, Orion® Network Atlas, PDF and PNG formats
- Schedule regular scans of the network to automatically detect changes
- Get detailed reports on inventory, switch ports, VLANs and subnets
- Take care of reporting needs for PCI compliance and other regulatory requirements

In this document we'll look at the available map export options in NTM and understand how they can help easily document the logical layout of your network in different formats.

## Exporting Maps from SolarWinds Network Topology Mapper

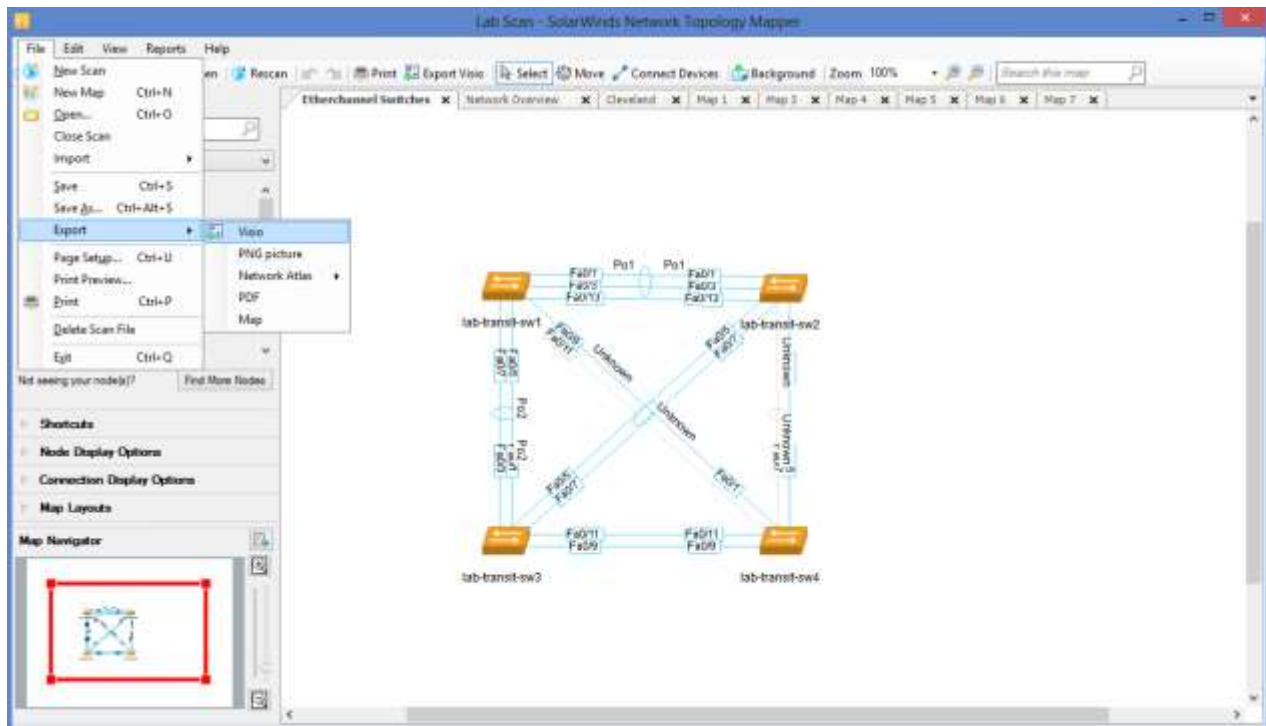
Using various discovery techniques like SNMP, ICMP, WMI, CDP, VMware® and Microsoft Hyper-V, Network Topology Mapper automatically discovers your LAN or WAN and produces comprehensive, easy-to-view network diagrams. Once the discovery process is complete and your topology information is drawn, you can adjust the map layout according to your requirement. It's important that you format your map in a way that allows you to quickly view the information most critical to your needs.

NTM provides you with options to export maps to [Visio®](#), Orion Network Atlas, PDF, and PNG formats.

## How to Export Maps from NTM

Click 'File' on the main menu and select 'Export' to choose from the available format options. Provide a file name and save in the required format.

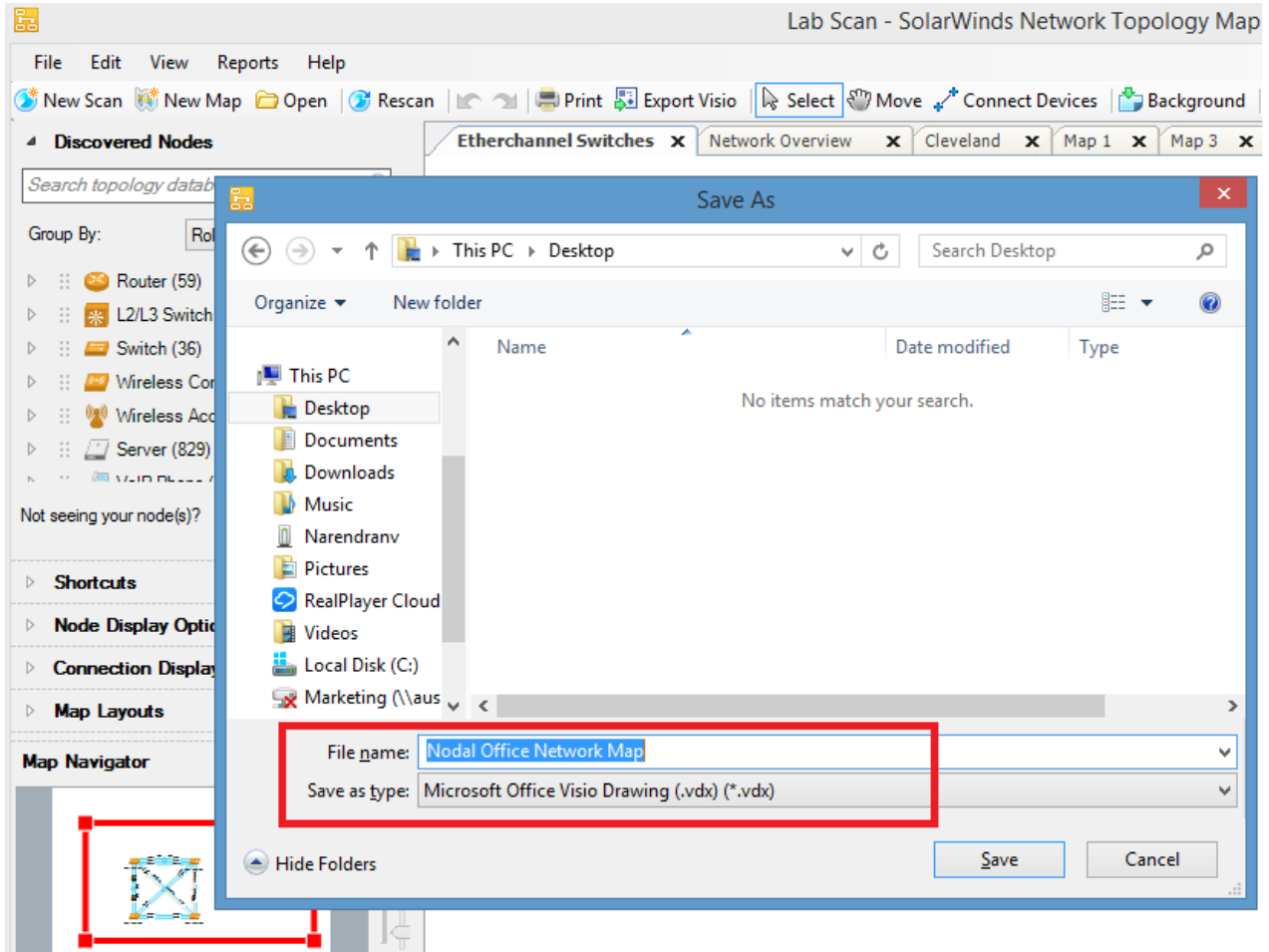
When exporting to Network Atlas or other NTM formats, you'll be prompted for a map password. Enter any password as an encryption key for that export.



## How to Export NTM Maps to Visio®

Network Topology Mapper works with Visio® 2007, 2010, 2012, and 2013. To export to Microsoft® Visio®, click 'File' on the main menu, select 'Export' and choose 'Visio' from the available format options.

After the discovery process is complete, rearrange your map the way you want it to look. This is important because the export format will take the same layout that is specified while creating the map. Exporting maps into Visio® format automatically populates Visio® SmartShapes with network discovery data. This makes it more convenient and saves you a huge amount of time.

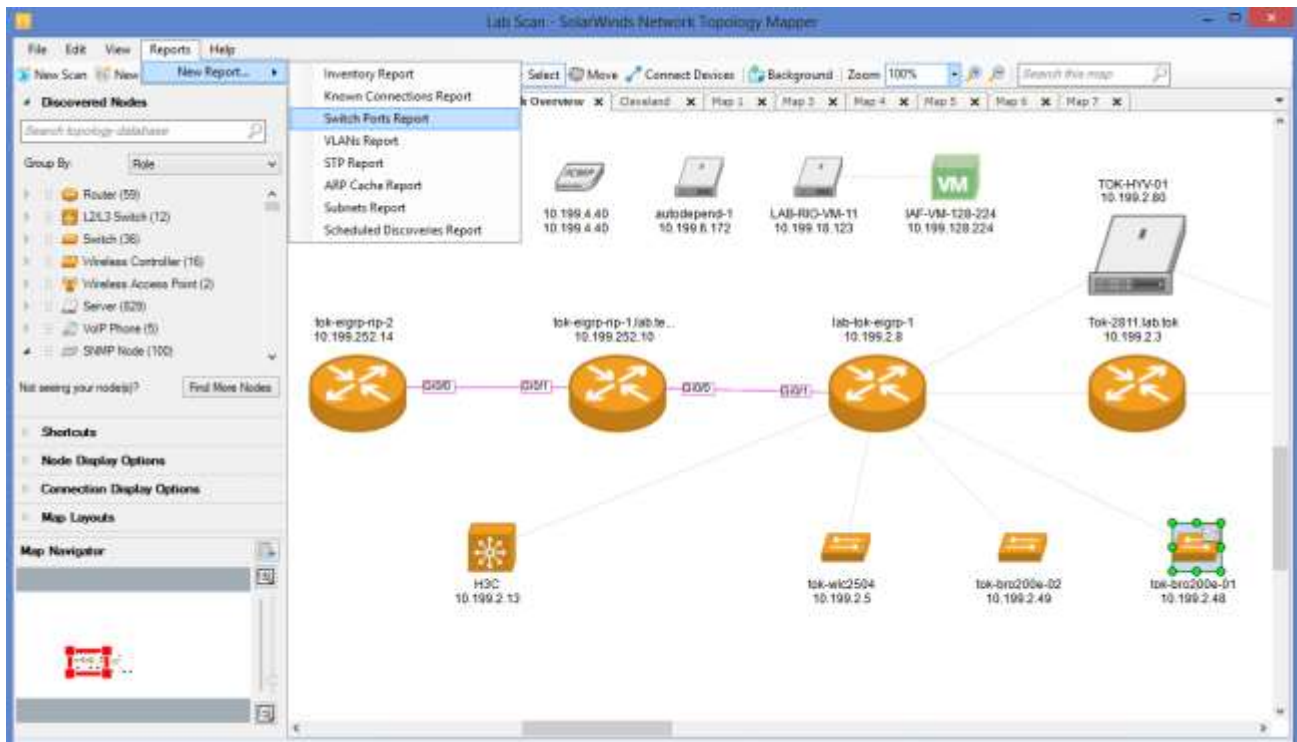


## Saving Network Maps in SolarWinds NTM

NTM provides you with the option to save files for documentation purposes. These files can also be exported to different formats as required. Click 'File' on the main menu, select 'Save as' and then navigate to the folder you want to save the file, enter a 'File name' and click 'Save'. To open a saved file, choose 'File' from the main menu and then click 'Open'.

## Generating Network Reports with NTM

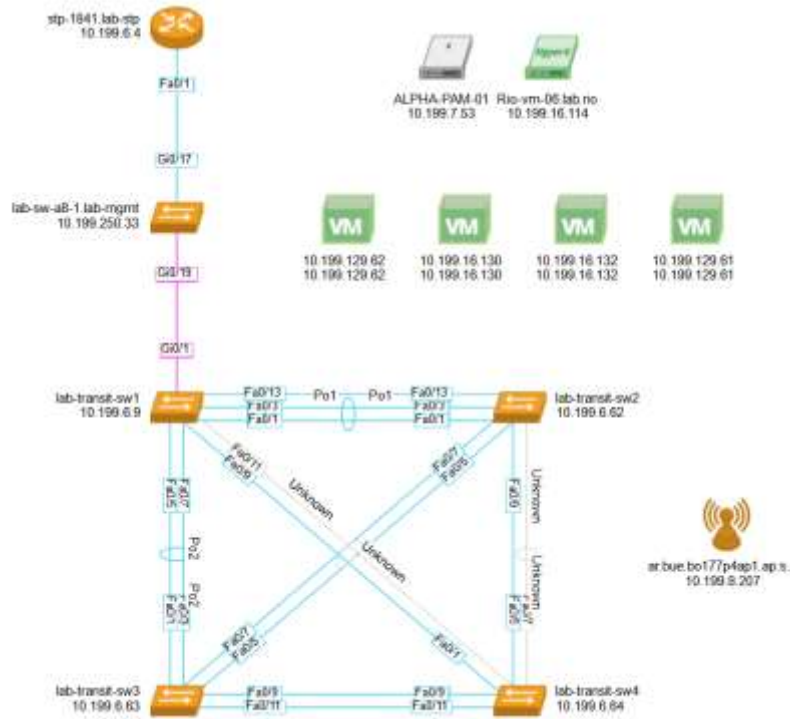
To run a report in NTM, click 'Reports' from the main menu and select 'New Report' to choose the report you want to run.



NTM also offers reports viz. **Inventory**, **Known Connections**, **Switch Ports**, **VLANs**, **STP**, **ARP Cache**, **Subnets** and **Scheduled Discoveries**.

## Key Reasons to Download SolarWinds Network Topology Mapper (NTM)

- Automated network [discovery and diagramming](#)
- Modular scanning - [build many maps](#) from a single network scan
- Out-of-the-box, customizable (resize, replace, align) industry-standard icons
- Do-Not-Scan list to define scan exclusions
- Multiple discovery methods - ICMP, SNMP v1-v3, VMware, CDP, Microsoft Hyper-V
- Credential management UI to automatically use stored credentials for future network discoveries
- Easily export to popular formats - Visio®, PNG, PDF (and Orion® Network Atlas)
- PCI, and HIPAA compliant network documentation



Try SolarWinds® Network Topology Mapper FREE for 14 full days - no obligation. Test drive our 100% functional software and start diagramming your network the easy way.

[LEARN MORE »](#)

[DOWNLOAD FREE TRIAL](#)

## About SolarWinds

[SolarWinds](#) (NYSE: SWI) provides powerful and affordable IT management software to customers worldwide. Focused exclusively on IT Pros, we strive to eliminate the complexity in IT management software that many have been forced to accept from traditional enterprise software vendors. SolarWinds delivers on this commitment with unexpected simplicity through products that are easy to find, buy, use, and maintain, while providing the power to address any IT management problem on any scale. Our solutions are rooted in our deep connection to our user base, which interacts in our online community, [thwack®](#), to solve problems, share technology and best practices, and directly participate in our product development process. Learn more at <http://www.solarwinds.com>.