

User Device Tracker

Devices Can't Hide When SolarWinds User Device Tracker Is On The Hunt!

Why pay for a pricey switch port tracking appliance when our user device tracking software can solve your problems—quickly and affordably!



What do you do when you need to find a device on your network and all you have is an IP address? Switch and port management can be a game of beat the clock when you're trying to find a lost or rogue device before it logs off your network. SolarWinds User Device Tracker (UDT) makes it easy to instantly find a device and retrieve the username, switch name, port, port description, VLAN and more. Simply search on a username, IP address, Hostname or MAC address, and User Device Tracker will quickly find the current location of your

device. If the device is not currently connected to the network, historical data will show the last known location. You can even set up alerts to notify you when specific users or devices connect—so you can be there waiting. It's like having your own network-sniffing bloodhound!

SolarWinds User Device Tracker delivers the device-tracking capabilities of an expensive switch port-tracking appliance at a price point that won't have your CFO looking around where you don't want him or her to be. There's no reason to drop a bundle on an expensive appliance when you can use SolarWinds User Device Tracker to quickly find lost or rogue devices, create a device watch list and even track switch capacity.

SolarWinds UDT Highlights

- Search on username, hostname, IP address or MAC address to trace the current location of a device
- Locate rogue devices quickly and easily
- Quickly find where a user is logged in and who was logged in at a specific time leveraging active directory content
- Find available network ports
- Respond to network threats and events at lightning-speed
- Watch for a specific MAC address or Hostname to connect
- Find out where a device has been on the network in the past
- Learn the last known location of an unconnected device
- Discover switches operating near full capacity
- Display switch capacities to justify purchase of new equipment
- View individual ports per switch, reclaiming unused ports

SolarWinds User Device Tracker Features

Device Tracking Made Easy

SolarWinds User Device Tracker makes tracking users and devices easy and automatic. Gone are the days of manually trying to find a user or device that has become a security threat. You can instantly find the switch name, port, port description or VLAN for the user or device by running a quick search on its username, MAC, IP or hostname. If the user or device are no longer connected, no problem! SolarWinds User Device Tracker even shows historical results, so discovering a user or device's past location is a breeze!

Switch Monitor

The switch monitor feature in SolarWinds User Device Tracker makes it easy to keep a close eye on the status of your switches with the simple click of a mouse. Arrange your switches in a handy tree view organized by vendor, location, status and many other parameters. Then, click on a switch in the tree to instantly see every port. A green light lets you know a port is in use and hovering over a port gives easy access to port status, VLAN, number of connected devices and more.

Device Watch List

Are you on the hunt for a lost or suspicious device? A device watch list created with SolarWinds User Device Tracker helps you keep an eye on specific devices. Simply search for a device by MAC address, IP address, or Hostname and add it to a device watch list. During network scans, SolarWinds User Device Tracker will be on the lookout for the little troublemaker and will alert you the next time it is seen on the network.

Switch Port Monitoring

Where are your devices, and how are they performing? Using the switch port monitoring feature in SolarWinds User Device Tracker, you can quickly identify equipment that is working at or near maximum capacity. You can display switches by ports used, CPU load, memory used and more to make switch port monitoring painless and load balancing a snap. Need switch port monitoring for satellite offices? Not a problem. The switch location doesn't make a difference—everything is administered from a single pane of glass.

Network Discovery

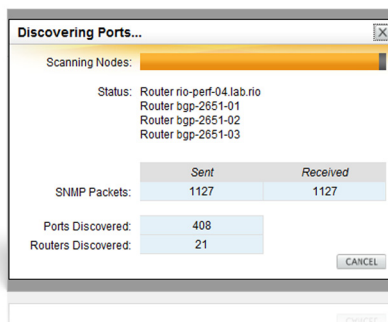
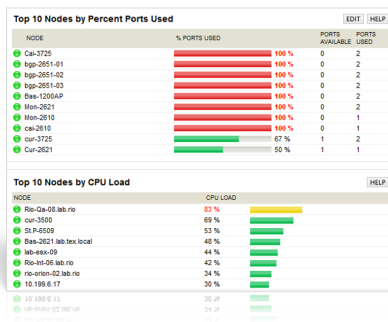
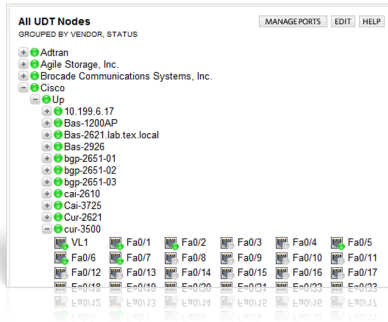
Maintaining a real-time list of switches and network devices is no small task when you are managing a dynamically-changing network. It's hard to keep track of the rapidly multiplying numbers of network devices. That's why we designed the network discovery features in SolarWinds User Device Tracker to automatically discover new devices that are added on your network. SolarWinds UDT initiates automated network scans that produce comprehensive network switch/port lists saving time by eliminating manual database entries.

Port Tracking

Port tracking features in SolarWinds User Device Tracker allows you to see port details and attached device history with a simple click! Details include the port name, number, VLAN and duplex along with a complete history of devices that have been attached to the port. Want to see if other devices have been plugged into this port or how long the current device has been there? With the port tracking features in UDT, you get all of this information and more!

LUCID Interface

Most software vendors claim their software is easy to use. But at SolarWinds, we are taking "easy-to-use" to a whole new level with our LUCID™ Interface. Based on feedback from thousands of engineers just like you, we have identified and implemented five critical interface attributes that simplify network troubleshooting and created a web interface that is Logical, Usable, Customizable, Interactive and Drill-down. The LUCID interface allows you to manage by exception, customize and view data in graphs, tables, maps and "top-ten" lists as well as receive instant notification when devices are added to or removed from the network.



HARDWARE	MINIMUM REQUIREMENTS
CPU	500MHz
Memory	128MB
Hard Drive	At least 640MB
Other	Network card or modem required; sound card recommended, but not required.

SOFTWARE	MINIMUM REQUIREMENTS
Operating System (32-bit or 64-bit)	Microsoft Windows 7, Vista, XP SP2, Server 2008 R2, Server 2003 SP1 and R2, and Server 2000 SP4. .Net Framework Version 2.0 or later.
Web Browser	Internet Explorer 5.0 or later
Other	Network card or modem required; sound card recommended, but not required.

About SolarWinds

SolarWinds is an IT Management software company that makes powerful, affordable, easy to use software. SolarWinds has over 95,000 customers worldwide and an active community site thwack.com with more than 60,000 IT practitioners. SolarWinds offers free trial versions of its products which can be downloaded from solarwinds.com and in most cases, they can be installed and running in under an hour.